

NOMENCLATURE PARTS LIST

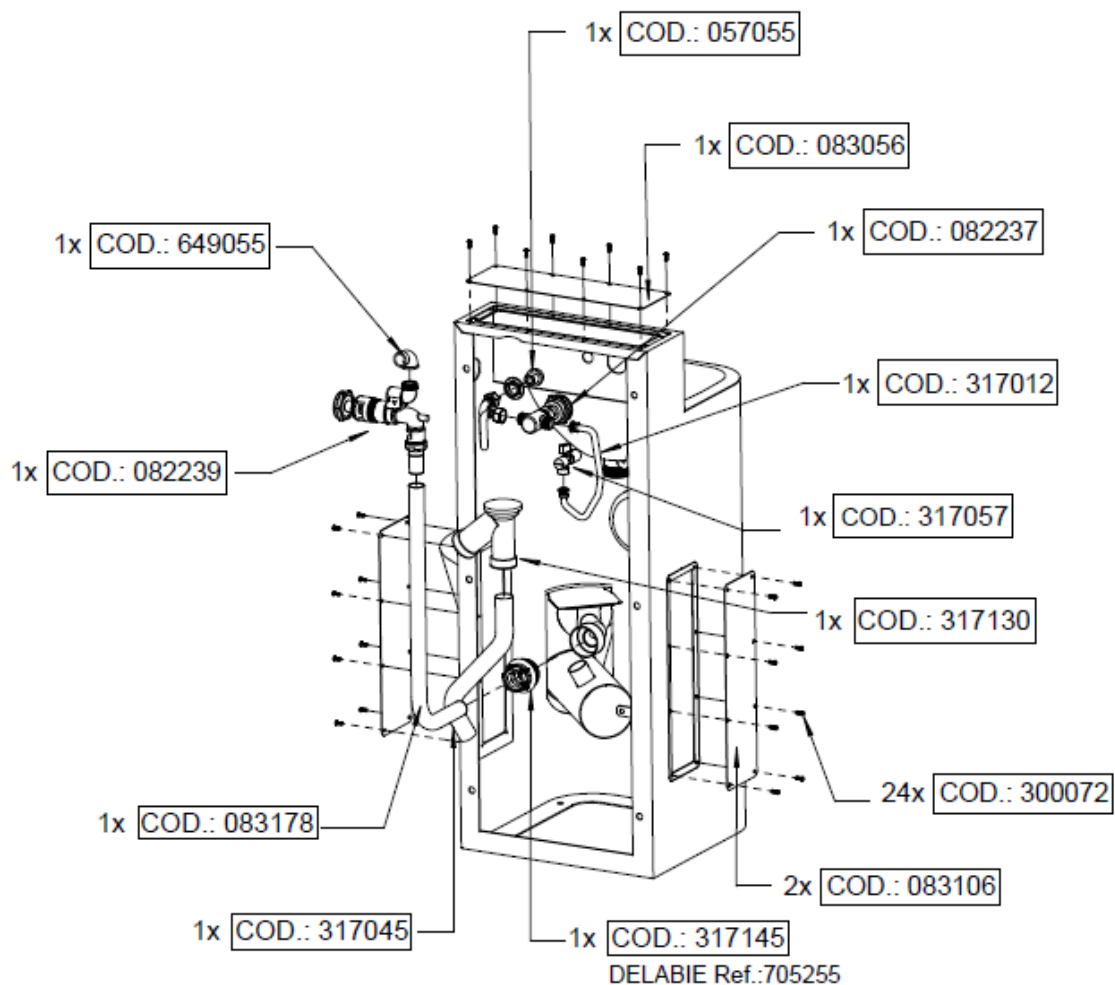
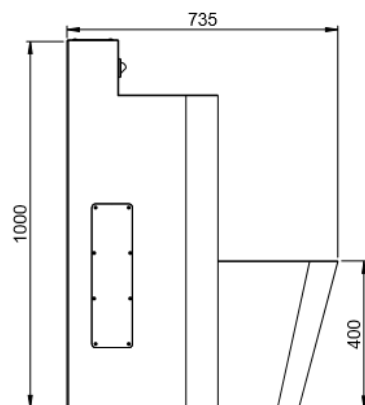


Management
System
ISO 9001:2008
www.tuv.com
ID 9105054937

DELABIE

Revision: A

Product Reference: **0610030006 (S)** Description: **Combi KOMPACT Satin 1W, w/ direct flushing, floor standing WC, right**



NOMENCLATURE PARTS LIST



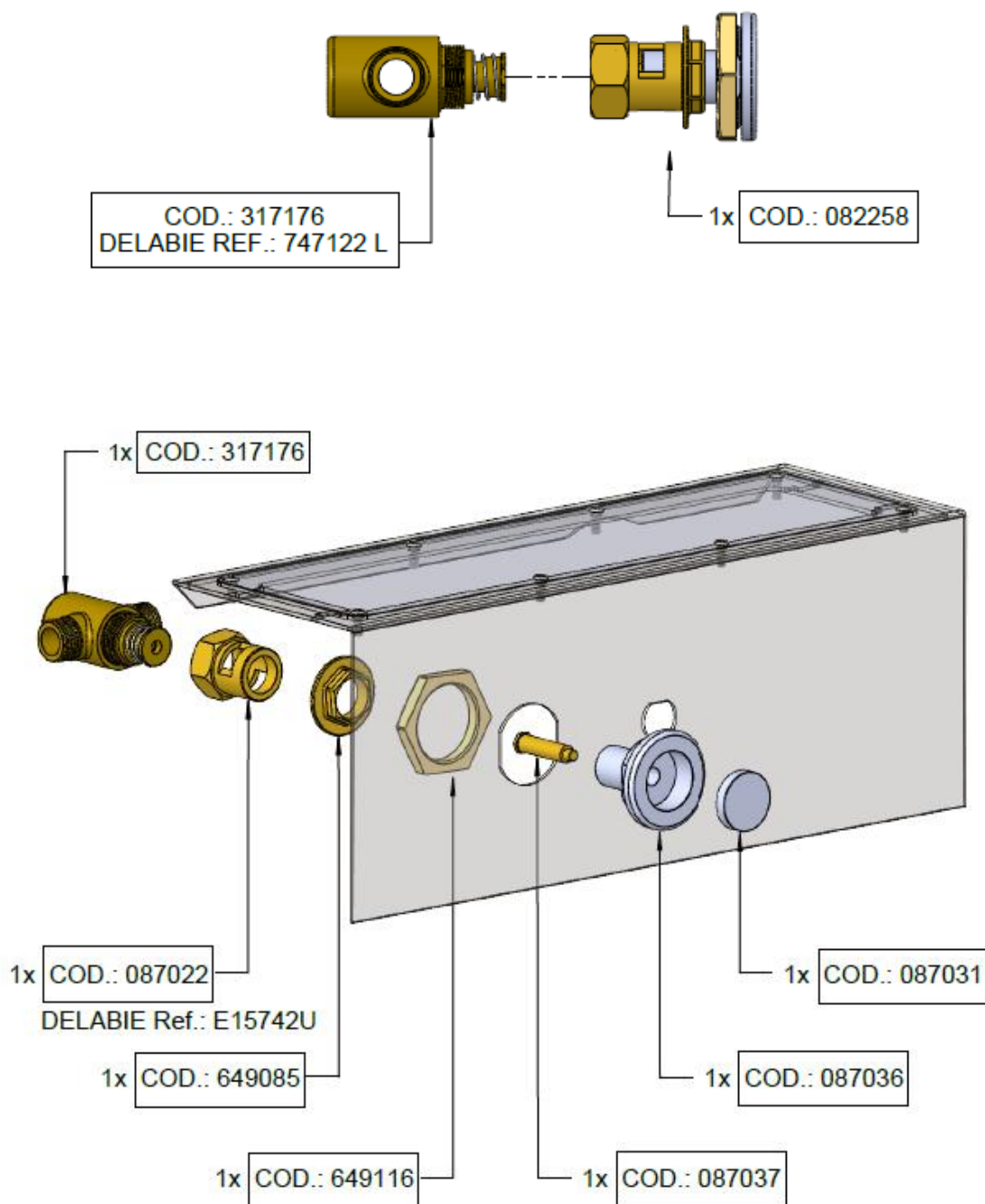
Management
System
ISO 9001:2008

www.tuv.com
ID 9105054937

DELABIE

Revision: A

COD.: 082237



NOMENCLATURE PARTS LIST

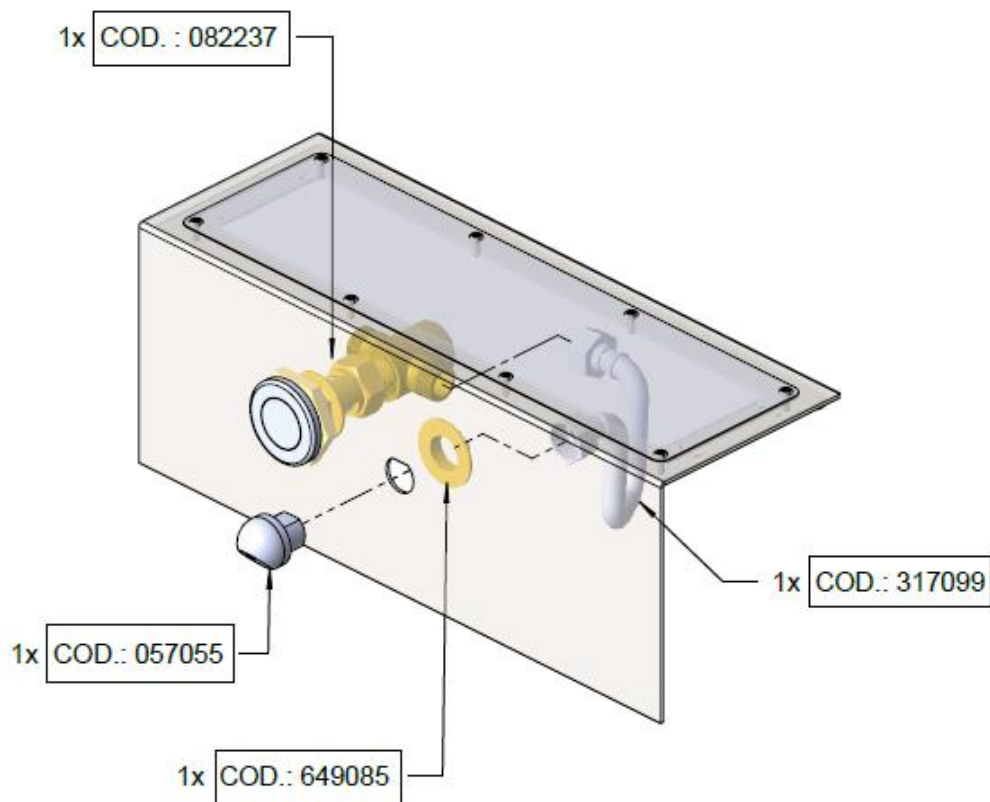


Management
System
ISO 9001:2008
www.tuv.com
ID 9105054937

DELABIE

Revision: A

COD.: 057055



NOMENCLATURE PARTS LIST



Management
System
ISO 9001:2008
www.tuv.com
ID 9105054937

DELABIE

Revision: A

